



EMKA is presenting new 180-degree hinge in Hanover

EuroBLECH 2018: Electronically operated locks for switch and industrial cabinets

As the trailblazer in the development of sophisticated locking systems EMKA Beschlagteile GmbH & Co. KG is presenting its new developments for the sector at the EuroBLECH 2018. In Hanover, electronic locking solutions, a quarter turn whose look can be freely adapted to the customer's wishes and an innovate 180-degree hinge with captive pin are in the spotlight. On stand D34 in hall 17, EMKA is presenting its portfolio of swinghandles, quarter turns, hinges and gaskets.

This year, EMKA is highlighting its range of electronic locking systems, as customers request more and more solutions with which they can prevent unwanted access to switch cabinets or server racks and monitor accesses. With the new development "eCam" EMKA has responded to this requirement. The new locking system includes an electronic cam lock which makes it almost impossible for unauthorised people to open doors or flaps. In this way (perilous) safety zones, for example, on switch cabinets and machines can be secured. eCam can be easily retrofitted and is also available as a system solution via software integration to register and log every access dead on time. The latter serves the purpose of documenting access control and monitoring switch cabinets to review from a central point when what person (authorised or unauthorised) had access to a cabinet.

Hinge with captive pin

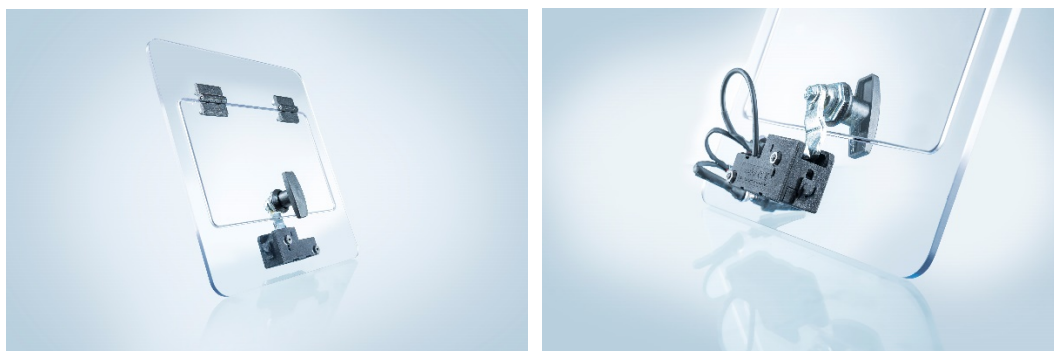
Another innovative solution complements EMKA's hinge portfolio: In Hanover, a new hinge with captive pin will be presented. The 180-degree-hinge is particularly suitable for areas or sectors where it is to be made sure that the hinge pin does not get lost. Its primary application is in single and in-line cabinets with single doors and a clearance of 25 mm. The captive pin adds extra security to the complete design. It can be pulled out from the outside up to the limit stop. The door with this hinge can only be unhinged at an opening angle of 90 degrees; if the pin is withdrawn. When the door is closed, however, the door cannot be unhinged.

Laminated quarter turn with its own CI or in stainless steel look

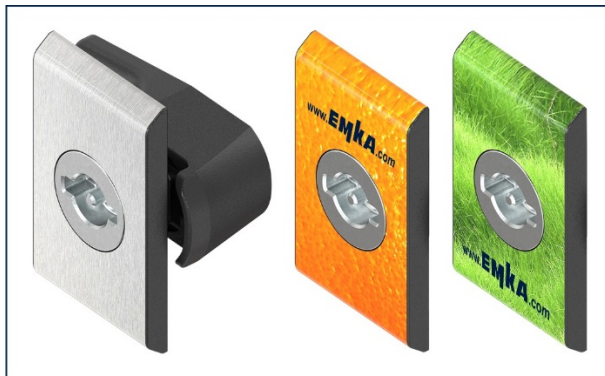
As the centrepiece of a professional locking solution quarter turns need to be uncomplicated, easy to mount and close tightly in the first place. Since, besides the functionality, the demands by the customers for good looking designs are increasing, e. g. regarding the design of their own CI - EMKA has developed a quick-mounting quarter turn with laminated housing plate. In addition to its proven high tightness (IP69K), EMKA can create the quarter turn in almost any type of look that can be made by in-mould labelling. As a standard version EMKA supplies this product innovation in stainless steel look.

At the EuroBLECH 2018 on stand D34 in hall 17, the EMKA experts are pleased to inform you about the many fields of application and the various electronic locking systems.

Further information can be found on <https://www.emka.com>.



BU: *The cam of the quarter turn on the inside of the cabinet is secured by the new electronically controlled lock “eCam”.*



BU: *The new quarter turn cannot only be mounted within seconds, it can be individually designed with almost any motif.*



BU: *With the new hinge with captive pin EMKA complements its portfolio by another innovative solution.*

Umfang: x.xxx Zeichen (inkl. Leerzeichen)

Version: 02/08/2018

About EMKA

The EMKA GROUP is world market leader for locks and latches, hinges and gasketing used in switch and control cabinets for electronics and electrotechnology. The company is also among the leading manufacturers of locking technology in the fields HVAC technology and transport. The complete range of products comprises 15,000 items, developed, manufactured, refined and assembled at production



sites in Germany, France, England, Spain, Bosnia, US and China. The company is represented in 52 countries employing more than 2,100 employees.

EMKA is a specialist in casting of stainless steel, in injection-moulding of zinc and high-performance plastics as well as in extruding of rubber and plastic profiles. To ensure a uniquely high level of in-house production, there are also our own in-house punching, bending, lathe machining, milling, coating or powder coating departments as well as the final assembly of the modular product range. Für die Realisierung individueller Kundenprojekte steht bei EMKA ein erfahrenes Team von Designern, Entwicklern und Konstrukteuren bereit. The company sets the benchmark in terms of quality, in-house production and delivery performance.

EMKA: Ingenious Locking Technology.

Unternehmenskontakt

Dr. Ralph Kloth • EMKA Beschlagteile GmbH & Co. KG
Langenberger Straße 32 • 42551 Velbert
Telephone: +49 (0) 20 51-273 337 • Fax: +49 (0) 20 51-273 112
E-Mail: presse@emka.de • Internet: www.emka.com

Pressekontakt Agentur

Marius Schenkelberg • additiv pr GmbH & Co. KG
Pressearbeit für Logistik, Stahl, Industriegüter und IT
Herzog-Adolf-Straße 3 • 56410 Montabaur
Telephone: +49 (0) 26 02-950 99 25 • Fax: +49 (0) 26 02-950 99 17
e-mail: ms@additiv-pr.de • Internet: www.additiv-pr.de